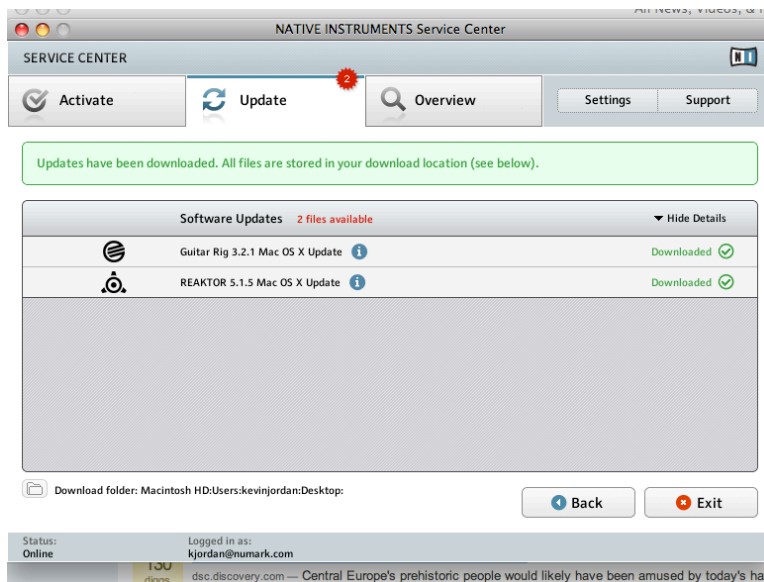
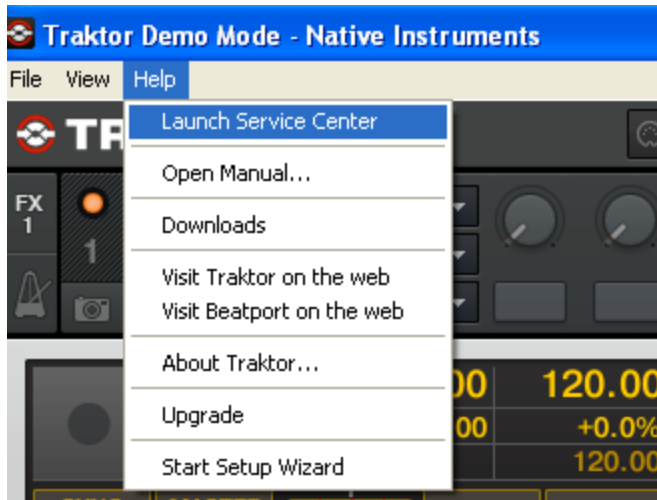


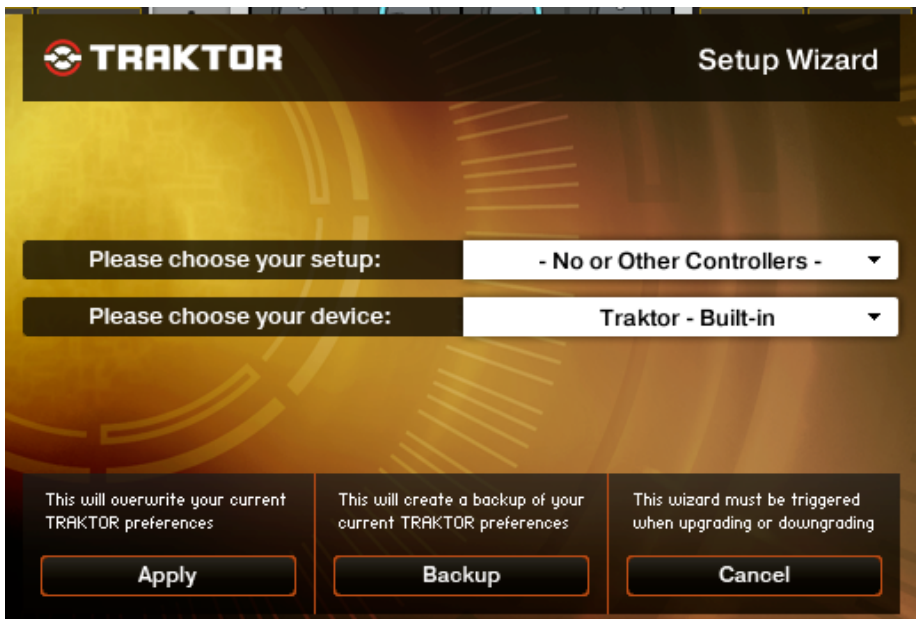
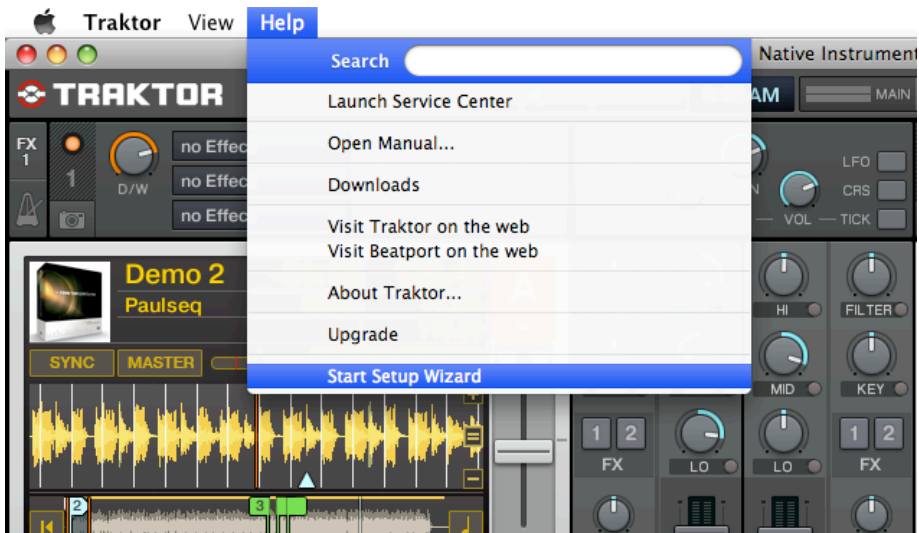
Setting Up the Total Computer and DJiO with Traktor LE

1. Before you begin, make sure you have the latest version of Traktor LE installed.

Launch Traktor LE, then go to **Help > Launch Service Center**. Select the **Updates** tab and make sure you download any **Traktor** updates you see.



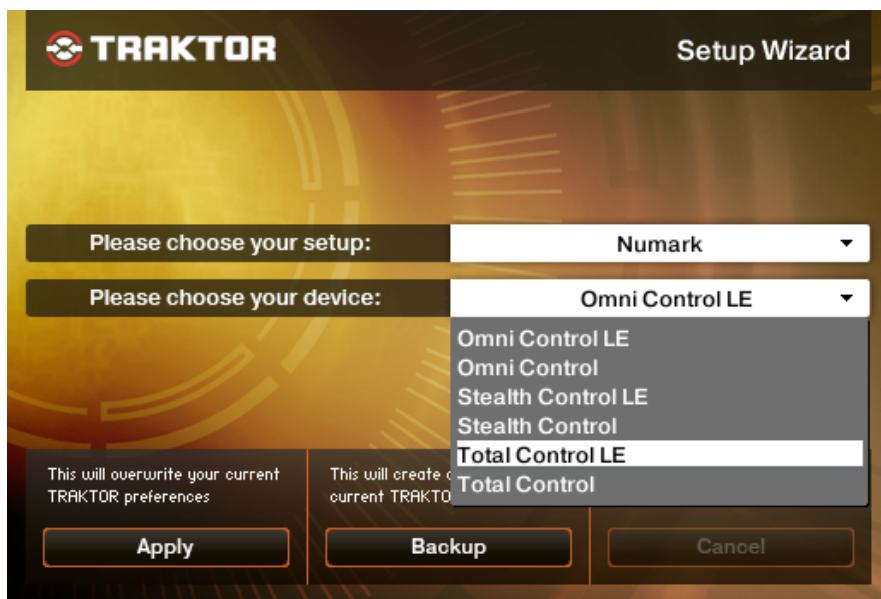
- Next, in Traktor LE, go to **Help > Start Setup Wizard**. In the window that opens, you will see **setup** and **device** drop down menus.



- Under **setup** choose **Numark**.



- Under **device** choose **Total Control LE**. Then click **Apply**. (if **Total Control LE** is not an available choice, then choose **Total Control**).



Your Total Control USB MIDI controller is now configured to control Traktor LE! If you are using the Numark DJ|iO as your computer audio interface, proceed with the steps below to configure it with Traktor LE.

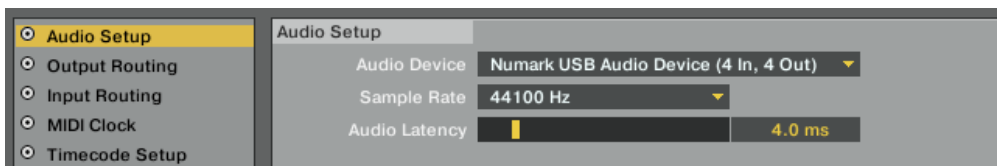
5. To configure an audio device with Traktor LE, go into the **Preferences** menu.

- On Windows, go to **File > Preferences**.
- On Macintosh, go to **Traktor > Preferences**.



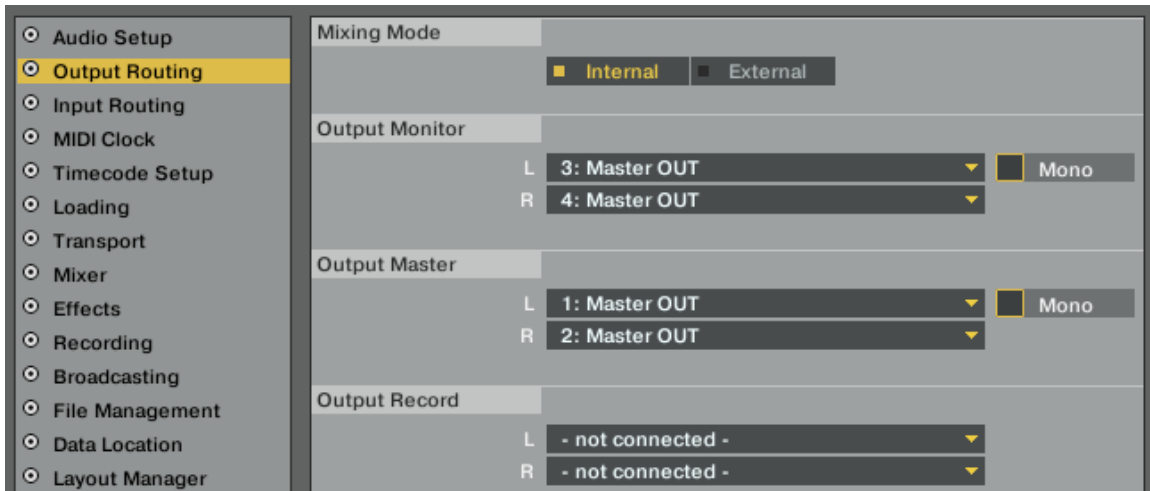
6. Next click on **Audio Setup**. If you are using the Numark DJiO as your computer audio interface, proceed with the steps below to configure it with Traktor LE.

- On Windows, make sure that **Numark USB Audio Device (ASIO)** is selected.
- On a Macintosh, make sure you choose **Numark USB Audio Device** in this same drop down.



7. Next, click on **Output Routing** on the left-hand side of the window. Here you will have the option to route your audio in any fashion you'd like. The **Numatk DJjiO** has 4 outputs.
- On PC you will see **Numark USB Audio 1, 2, 3, and 4.**
 - When on the Mac you'll see **Master OUT 1, 2, 3 and 4.**

The recommended configuration is displayed below:



You should be set up and ready to go. Remember to enable cue by pressing the Cue button in the top left/right of the controller.