

IDJ2 Crossfader Removal and Installation

Note: Before attempting this installation it is highly recommended to properly ground yourself as to not cause a static discharge which could damage the IDJ2. Also, the use of a magnetic screwdriver during the installation is recommended.

1. Please power off your IDJ2 and disconnect the power supply.
2. Remove crossfader cap from stem.



3. Place the IDJ2 face down on a soft, cushioned surface.



4. Remove all 14 screws from the back panel.

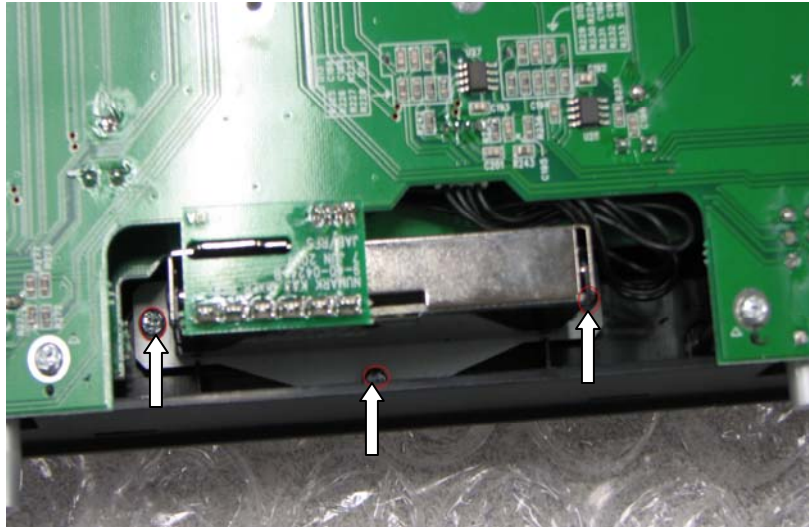


5. Remove the back panel.



Crossfader 

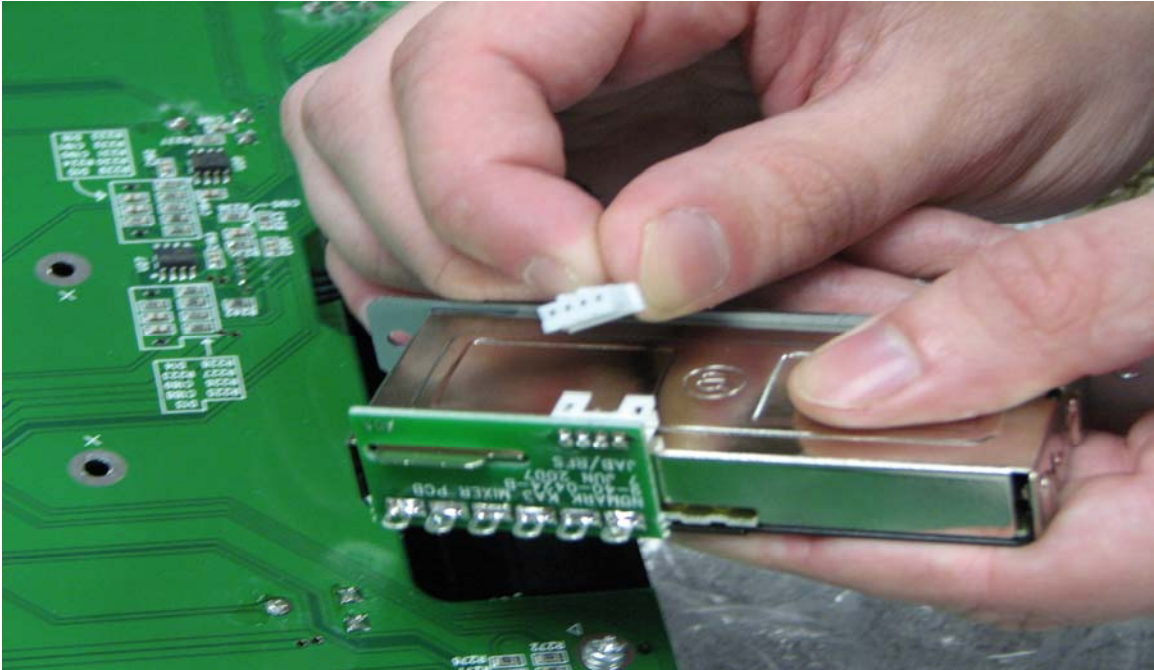
6. Remove the 3 screws holding the crossfader in place.



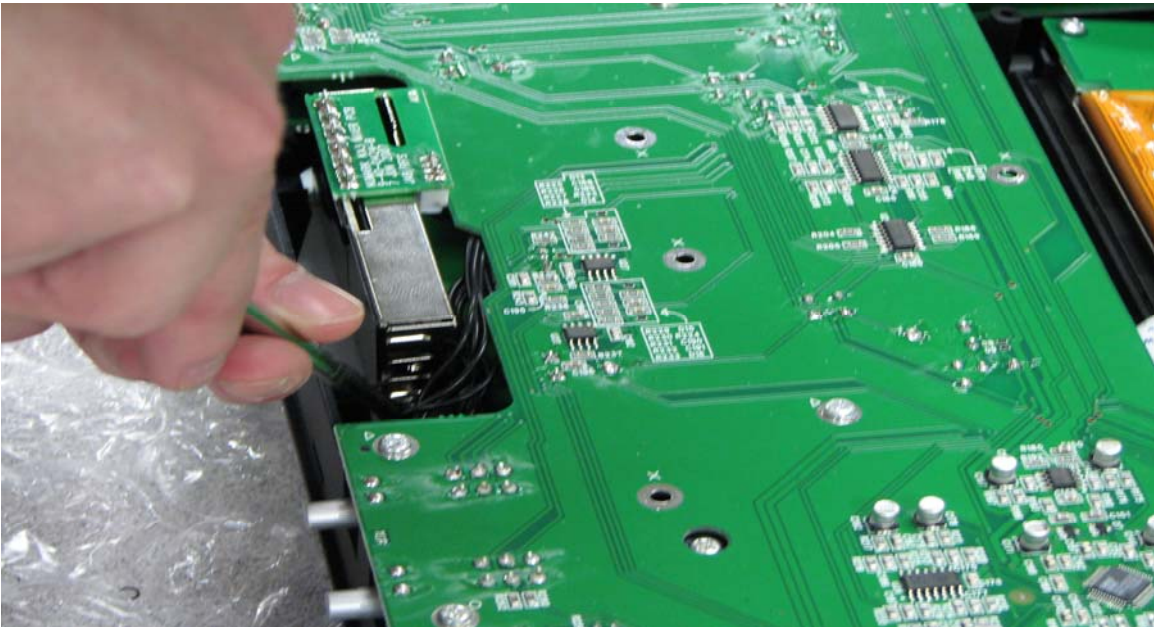
7. Remove crossfader from the IDJ2 and disconnect the white connector.



8. Take the new crossfader and connect it to the white connector.



9. Place the crossfader back in the IDJ2 and screw it in securely (3 screws)



10. Make sure the wires from the crossfader are not sticking out in any way.



11. Place the back panel back on the IDJ2 and re-attach using the 14 screws from Step 4.



12. Place the crossfader cap back on the stem.



You're done!