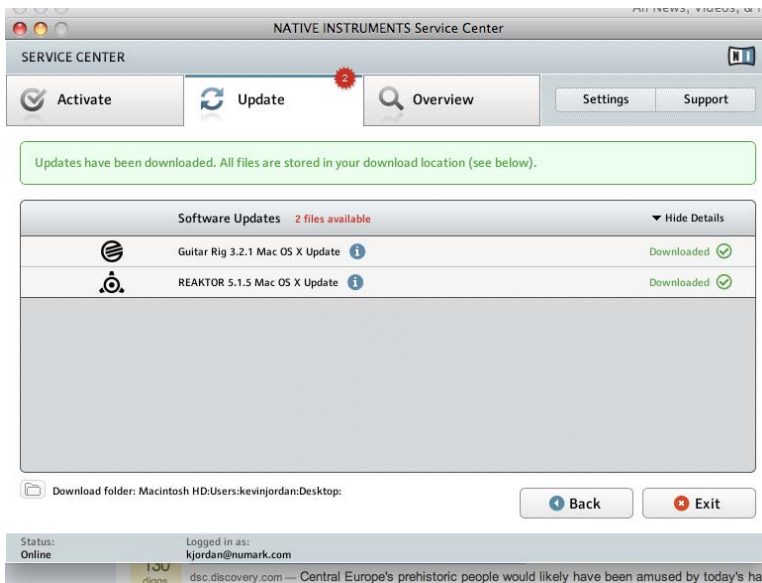
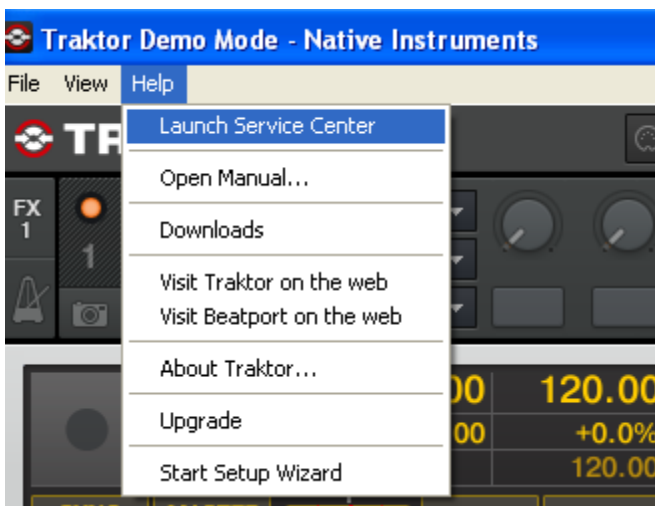


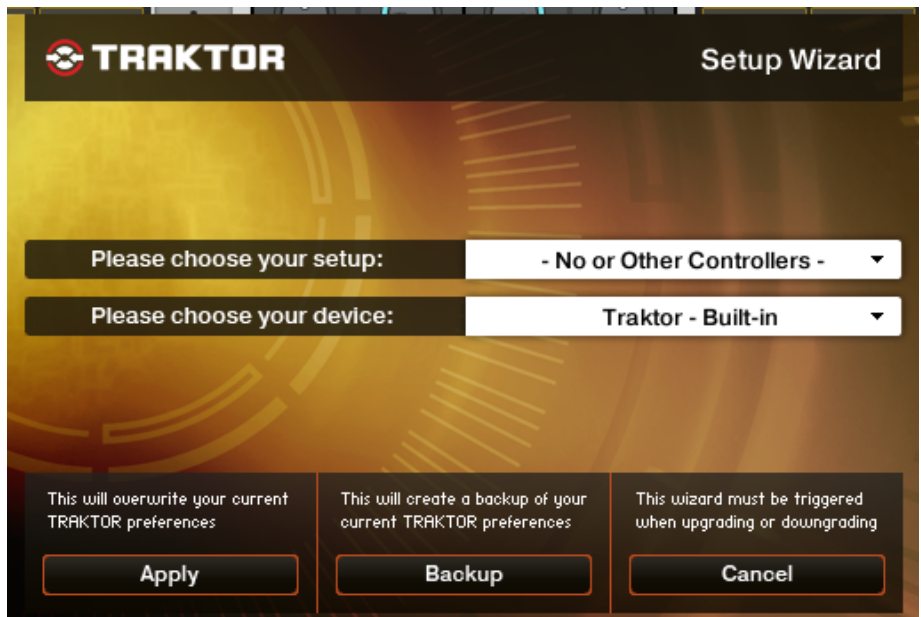
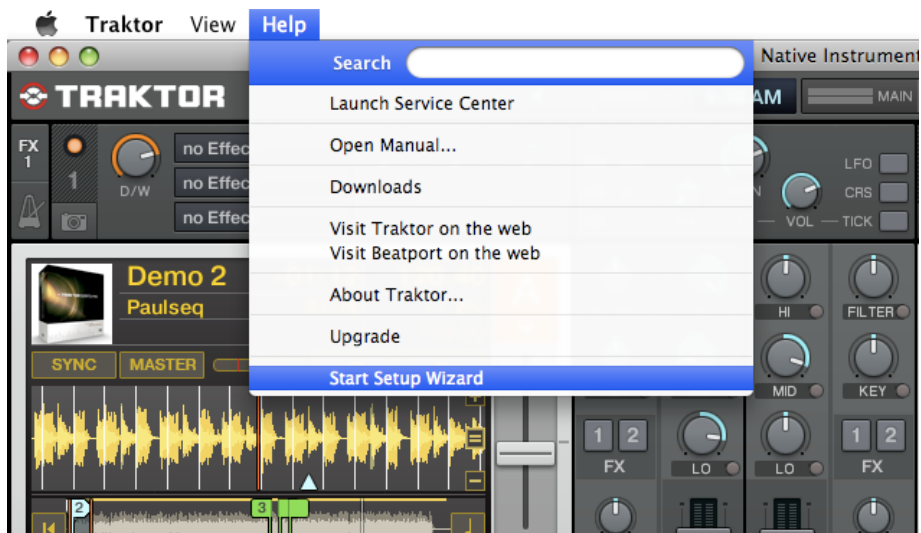
Setting Up the OMNI Control in Traktor LE

1. Before you begin, make sure you have the latest available OMNI Control drivers for your system installed on your computer. Visit www.numark.com/omnicontrol.
2. Next make sure you have the latest version of Traktor LE installed.

Launch Traktor LE, then go to **Help > Launch Service Center**. Select the **Updates** tab and make sure you download any **Traktor** updates you see.



- Next, in Traktor LE, go to **Help > Start Setup Wizard**. In the window that opens, you will see **setup** and **device** drop down menus.



4. Under **setup** choose **Numark**.

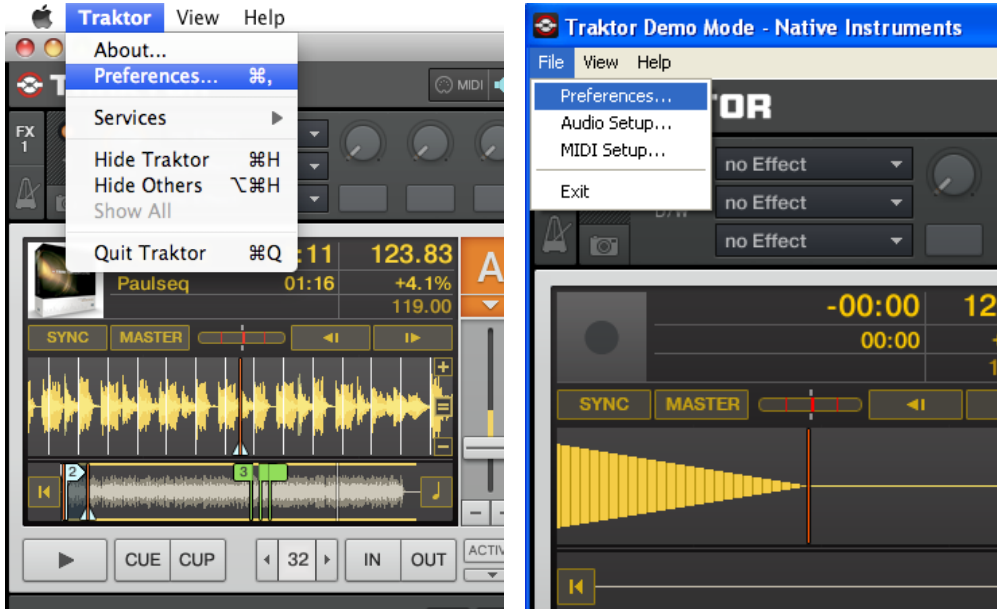


5. Under **device** choose **OMNI Control LE**. Then click **Apply**. (note, if **OMNI Control LE** is not an option, choose **OMNI Control**)



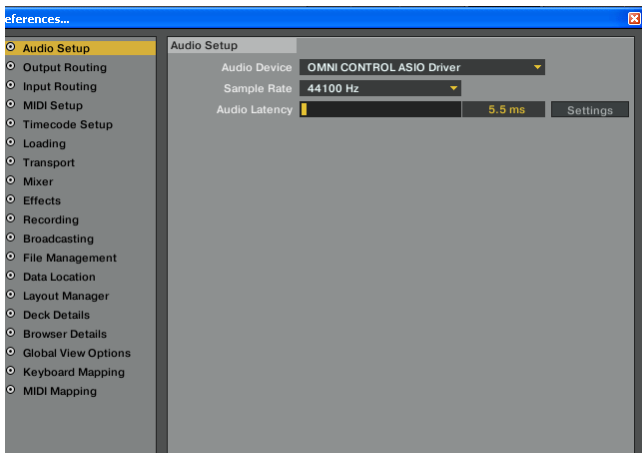
6. Next, to go into the **Preferences** menu in Traktor LE to configure the **Midi/Audio** settings.

- On Windows, go to **File > Preferences**.
- On Macintosh, go to **Traktor > Preferences**.



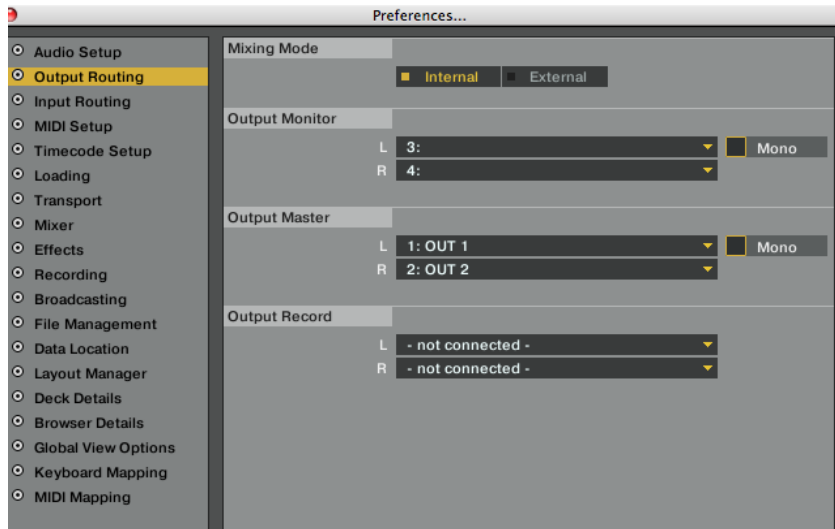
7. Next click on **Audio Setup**.

- On Windows, make sure that **OMNI CONTROL ASIO Driver** is selected.
- On a Macintosh, make sure you choose **Numark USB Audio Device** in this same drop down.



8. To set up your audio input and output configuration click on **Output Routing/Input Routing**. Here you will have the option to route your audio in any fashion you'd like. The **Omni Control** has 4 outputs.

- On PC you will see **Numark USB Audio 1, 2, 3, and 4**.
- When on the Mac you'll see **Out 1, Out 2, Out 3 and Out 4**.



You should be set up and ready to go. Remember to enable cue by pressing the Cue button in the top left/right of the controller.