


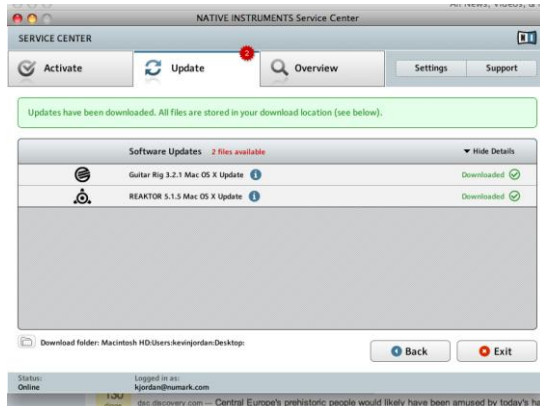
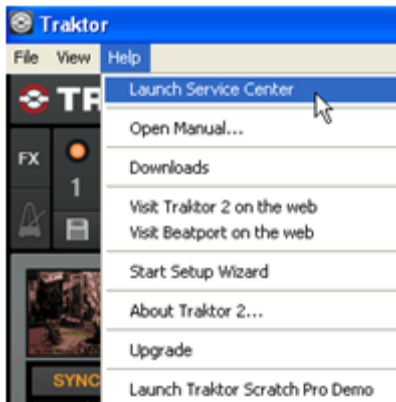
Contents

Software Setup Walkthrough	1
Frequently Asked Questions.....	4
My ASSIGN Knob and ASSIGN Sliders don't work. Is something wrong?	4
The MODE button on the FX bar doesn't function. Is something wrong?	4
How do I assign effects to each deck?	4
Further Technical Support.....	4

Setting Up the Numark 4TRAK with the included Traktor 4TRAK Edition 2 Software

1. Make sure you have the latest available 4TRAK drivers for your system installed on your computer. Visit <http://www.numark.com/4trak>.
2. Before to launching Traktor 2 for the first time, make sure that...
 1. The 4TRAK is connected to a USB 2.0 port on your computer. If you are using a desktop computer, use a port on the rear of the computer.
 2. That the 4TRAK is powered on.
 3. That the [drivers](#) have been installed. Note: always restart your computer after installing or updating drivers.
3. Next, make sure you have the latest version of Traktor 4TRAK Edition 2 installed.
 -  Need help authorizing the included software? Just visit the link below:
 - www.numark.com/authorizationhelp

Launch Traktor 2, then go to **Help > Launch Service Center**. Select the **Updates** tab and make sure you download any **Traktor 2** updates you see.



- Next, in Traktor 2, go to **Help > Start Setup Wizard**.



- In the window that opens, click **Finish**. The software will attempt to set itself up automatically. The **Setup Wizard** window will close.

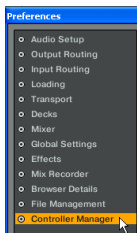
Note: this step will not succeed if your 4TRAK is not connected and powered on, or if the 4TRAK drivers have not been installed.



- Next, in the upper-right of the Traktor 2 main window, click the gear-shaped button to open the **Preferences** window.



- On the left-hand side of the window that opens, select **Controller Manager**.



- Under **Device Setup**, select the **Device** menu, and choose **Numark/4TRAK.Main**.



- For the **Numark/4TRAK.Main**, set **In-Port** to the following:

Windows XP

Set the **In-Port** to **Numark 4Trak MIDI**



Windows 7, Vista, and Macintosh

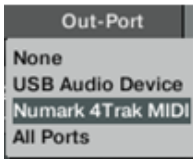
Set the **In-Port** to **4Trak (MIDI)**



10. Set **Out-Port** to the following: **Numark 4Trak MIDI**.

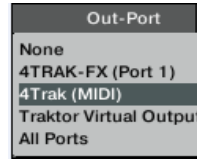
Windows XP

Set the **Out-Port** to **Numark 4Trak MIDI**



Windows 7, Vista, and Macintosh

Set the **Out-Port** to **4Trak (MIDI)**



11. Select the **Device** menu again, and choose **Numark.4TRAK.FX**.



12. For the **Numark.4TRAK.FX**, set **In-Port** to the following:

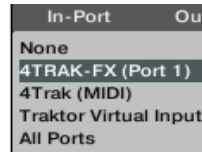
Windows XP

Set the **In-Port** to **USB Audio Device**



Windows 7, Vista, and Macintosh

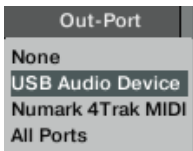
Set the **In-Port** to **4Trak-FX (Port 1)**



13. For the **Numark.4TRAK.FX**, set **Out-Port** to the following:

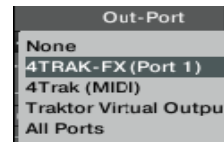
Windows XP

Set the **Out-Port** to **USB Audio Device**



Windows 7, Vista, and Macintosh

Set the **Out-Port** to **4Trak-FX (Port 1)**



14. At the bottom-left of the window, click **Close**.



Frequently Asked Questions

My ASSIGN Knob and ASSIGN Sliders don't work. Is something wrong?

The knobs and sliders labeled **ASSIGN** are left open for the user to assign themselves. These can be assigned to a control of your choosing by opening **Preferences > Controller Manger**.



The MODE button on the FX bar doesn't function. Is something wrong?

The **MODE** buttons on the left and right side of the FX bar correspond to functions in Traktor PRO 2, and do not have a function when used with Traktor 4TRAK Edition 2.

How do I assign effects to each deck?

While holding down the **FX MIX** button, turn the **1**, **2**, or **3** knob to assign an effect to the first, second, or third effects bank.



Technical Support

- Have Questions? Need Help? Just visit the link below:
 - www.numark.com/supporthome
- Need help authorizing the included software? Just visit the link below:
 - www.numark.com/authorizationhelp